



User-based Licensing

Version 1.3

User Guide

Non-Confidential

Copyright © 2022–2025 Arm Limited (or its affiliates).
All rights reserved.

Issue 06

102516_1.3_06_en



User-based Licensing User Guide

This document is Non-Confidential.

Copyright © 2022–2025 Arm Limited (or its affiliates). All rights reserved.

This document is protected by copyright and other intellectual property rights.

Arm only permits use of this document if you have reviewed and accepted [Arm's Proprietary Notice](#) found at the end of this document.

This document (102516_1.3_06_en) was issued on 2025-04-30. There might be a later issue at <https://developer.arm.com/documentation/102516>

The product version is 1.3.

See also: [Proprietary notice](#) | [Product and document information](#) | [Useful resources](#)

Start reading

If you prefer, you can skip to [the start of the content](#).

Intended audience

This document is intended for Arm development tool users to provide information on how you can license your Arm development tools.

Inclusive language commitment

Arm values inclusive communities. Arm recognizes that we and our industry have used language that can be offensive. Arm strives to lead the industry and create change.

We believe that this document contains no offensive language. To report offensive language in this document, email terms@arm.com.

Feedback

Arm welcomes feedback on this product and its documentation. To provide feedback on the product, create a ticket on <https://support.developer.arm.com>.

To provide feedback on the document, fill the following survey: <https://developer.arm.com/documentation-feedback-survey>.

Contents

1. User-based licensing overview.....	5
1.1 Backwards compatibility.....	5
1.2 Interoperability with previous software licensing implementations.....	7
1.3 License lifecycle for user-based licensing.....	7
1.4 Requirements for user-based licensing.....	8
1.5 Find the License Management Utility version.....	10
1.6 User-based licensing utilities release history.....	11
1.7 User-based licensing terminology.....	12
2. Activate and deactivate your product license.....	14
2.1 Activate your product using a license server.....	14
2.2 Activate your product using an activation code.....	17
2.3 Proxy activation.....	19
2.4 Change the local license cache directory.....	21
2.5 Activate a license on multiple devices.....	22
2.6 Activate a license without installing tools.....	22
2.7 Extend your license.....	23
2.8 Deactivate and reactivate a product license.....	25
3. Diagnose licensing issues.....	28
3.1 100 - No license found.....	28
3.2 101 - Product activation conflict.....	28
3.3 200 - Expired cached license.....	29
3.4 201 - Support and maintenance contract expired.....	30
3.5 202 - Expired license.....	30
3.6 300 - Corrupted license.....	30
3.7 301 - Corrupted local license cache.....	31
3.8 400 - Unauthorized user.....	32
3.9 500 - Unexpected error.....	33
3.10 501 - Library communication error.....	33
3.11 Product not supported error.....	33
3.12 License capability data was invalid error.....	34
3.13 Contact support.....	34

3.14 Create a diagnostic report..... 35

4. Troubleshooting.....37

4.1 Patch user-based licensing..... 37

A. Environment Variables..... 39

Proprietary notice..... 41

Product and document information.....43

Product status..... 43

Revision history..... 43

Conventions..... 44

Useful resources.....47

1. User-based licensing overview

User-based licensing binds the entitlement to use an Arm product to the user. A user is entitled to use an Arm product license with no limits on concurrent usage, including using the same product on multiple devices. For example, you could use a single license with a service account to automatically build and test your products with Arm development tools on any number of devices.

You can get a license using one of the following methods:

- Entering an activation code
- Accessing a license server managed by a local administrator



This approach is different from the previous Arm licensing models; node-locked and floating licensing.

1.1 Backwards compatibility

User-based licensing does not apply to Arm development tools released before 2022.

The following table lists the minimum recommended versions for Arm development tools and the versions of the tools that initially supported user-based licensing.



Where possible, you should use the recommended minimum version or later of your Arm development tool. If you use an earlier version of the tool, you may encounter license failures. For example, with a [501 - Library communication error](#) or [License capability data was invalid error](#).

Table 1-1: First Arm development tool versions that support user-based licensing

Arm Development Tool	Recommended minimum version	First version that supports user-based licensing (if different)
Arm® Compiler for Embedded	6.19	6.18
Arm Compiler for Embedded FuSa 6.22	6.22.1	
Arm Compiler for Embedded FuSa 6.16		6.16.2
Arm Development Studio (Gold version)	2022.0	
Arm Development Studio (Platinum version)	2022.a	
Keil® MDK	5.38	5.37
Arm Fast Models	11.18	11.17.1
Arm® Socrates™	1.8.2	1.7.0
Arm Performance Model Library	1.2	
AMBA® Viz	1.1.25	

Licensing older Keil software

The following Keil products do not support user-based licensing but can be licensed with a user-generated node-locked license:

- MDK version 4.20 to version 5.36
- PK51
- PK166
- DK251
- AR166



- The node-locked license can only be generated when the user of the older Keil software has a current user-based licensing product that includes Keil MDK Professional.
- A node-locked license must be generated and activated on each user device that uses the older Keil software. The same user-based licensing license can be used to generate node-locked licenses on multiple devices for a single user.
- Node-locked licenses have the same expiry date as your product entitlement. The expiry date is shown in the output when you generate a node-locked license.
- For an overview of how to generate a node-locked license, watch the [Enabling Legacy Editions of Keil MDK video tutorial](#) (2:19 minutes).

To generate a node-locked license:

1. Download the latest Arm licensing utilities to the device where you want to run the Keil software. For more details see [Activate a license without installing tools](#).
2. Activate a license for an Arm user-based licensing product containing Keil MDK Professional on the device. You can use an installed Arm development tool or the latest Arm licensing utilities to activate the license.
3. From the command line, change directory to the directory containing the latest Arm licensing utilities.
4. Change directory to the `bin` directory.
5. Run the following command to generate node-locked licenses:

```
armlm genlic
```

The output from this command provides node-locked license codes for the appropriate Keil software. For example:

```
Detected user-based license for Hardware Success Kit (Early Access), Order ID:
0009132634, License expiry: April 21, 2024

Computer ID (CID): CDQC9-4QYA1
License ID Codes (LIC):
- For Keil MDK:      8MZ70-VT1M1-F270K-C7TX3-3FT8N-5EIHB
- For Keil PK51:    WH72V-8FI8T-28FU5-UUG9Y-EABNS-K9D06
- For Keil PK166:   SDETC-RPZW7-KYI1H-962WS-BNS98-D5AQJ
```

```
- For Keil DK251: 8DIGR-E2G7R-WQYEI-6FVVA-X9RMT-7LG15
```

Should you contact Support, please provide information regarding your user-based license, as the LIC is not linked to a registered Keil Product Serial Number (PSN).

The generated LICs were saved into file C:\Users\allusr01\armlm\logs\2024-03-26_11-05-32_16076.log

**Note**

Node-locked licenses have the same "grace" period as the user-based licensing product used to create the node-locked license. A grace period is a short period after the license expiry date where products work while a new product entitlement is obtained. During the grace period, a node-locked license can fail. If this happens, the user must [update their license utilities to the latest version](#) and create a new node-locked license.

1.2 Interoperability with previous software licensing implementations

You can use a combination of Arm development tools with user-based and other pre-existing licensing implementations, on the same device or the same network.

Arm development tools that implement user-based licensing automatically choose user-based licensing over other technologies, as long as a valid user-based license is found. Otherwise, Arm development tools use pre-existing licensing implementations.

1.3 License lifecycle for user-based licensing

Configuring and using Arm development tools that implement user-based licensing are split into the activation, use, and deactivation phases.

The details of these phases are:

Activation phase

Configures licensing for a specific Arm product and user, on a device. Activating a product creates a license in the local license cache for the device. This cached license is valid for 7 days. For more details, see:

- [Activate your product using a license server](#)
- [Activate your product using an activation code](#)
- [Activate a license on multiple devices](#)

For devices that do not have the required [network access](#), you can use [Proxy activation](#). This type of activation can also be used to quickly activate licenses on multiple machines, for example, in *Continuous Integration* (CI) cloud environments. For products activated by proxy

activation using License Management Utilities version 1.3.2 and later, the time a cached license is valid can be extended for up to 365 days.

For devices that do not have enough disk space for the license cache or do not have a home directory, you can [change the local license server directory](#).

Usage phase

When your Arm development tool runs, it checks the cached license in the device local license cache to make sure you are entitled to use the product.

Each day your development tool runs, the development tool automatically makes one attempt to renew the cached license for another 7 days by connecting to the local license server or the Arm license server. If the cached license cannot be renewed for 7 days, it becomes invalid. Unmet network requirements are only reported if the cached license becomes invalid.



Note

- For license server licenses, if you do not use your development tool for 7 days, your license becomes available to other license server users. If all licenses on the license server are activated by other users, you cannot renew your cached license. As a result, you will be unable to use your development tools on any devices.
- By default, for products activated by proxy activation using License Management Utilities version 1.3.2 and later, the development tool does not attempt to renew the cached license.

Deactivation phase

You can remove the entitlement of a user to use an Arm product on a device. For more details, see [Deactivate and reactivate a product license](#).

1.4 Requirements for user-based licensing

Users of Arm development tools that use user-based licensing requires the following:

- A username. The username activating the product must be identical on all devices.
- Disk space to store the license server cache.

The disk space can be on a network device. For details see [Change the local license cache directory](#). In this case, users require uninterrupted access to the license cache directory on the network drive.

- Network access or computer connectivity:
 - For [activation using a local license server](#), users require access to the IP address and port of the user-based licensing license server for license activation and renewal.

**Note**

This is the only license server port that users require access to.

-
- For [activation using an activation code](#), user require access to the internet. For more information see the "Network requirements for activation codes" section in this topic.
 - For [Proxy activation](#), the following are required:
 - A device with license server or activation code network access to create a license file.
 - A way of copying the license file to the devices that require Arm development tool access.

Network requirements for activation codes

When using activation codes for licensing, a user device requires internet access to the Arm license server using the following URLs:

- <https://api.arm.com/p-software-licensing>
- <https://arm.compliance.flexnetoperations.eu/instances>

The following information about the Arm license server URLs could help when configuring your firewall to allow access:

**Note**

- Protocol: HTTP with SSL.
- TCP port: 443.
- Hostnames: [api.arm.com](https://api.arm.com/p-software-licensing) and [arm.compliance.flexnetoperations.eu](https://arm.compliance.flexnetoperations.eu/instances). The use of IP addresses is not recommended because the IP addresses of the URLs are not static.

You can check if you have access to each Arm license server URL by using one of the following methods:

- Using a web browser on your system, copy and paste these URLs into the address field of your web browser.
- Using another tool that can access a URL. For example, `curl` can check URLs as follows:
 - For the <https://api.arm.com/p-software-licensing> URL:

```
curl https://api.arm.com/p-software-licensing/v1/health
```

The following output from this test confirms that the URL is accessible:

```
{
  "health": "up"
}
```

Any other response means you cannot access the URL.

- For the <https://arm.compliance.flexnetoperations.eu/instances> URL:

```
curl https://arm.compliance.flexnetoperations.eu/api/1.0/instances/ping
```

The output from this test includes the following that confirms that the URL is accessible:

```
"database" : {  
  "connectionCheck" : "success"  
},
```

If you cannot access these Arm license server URLs, check if a firewall is preventing access to these URLs.

1.5 Find the License Management Utility version

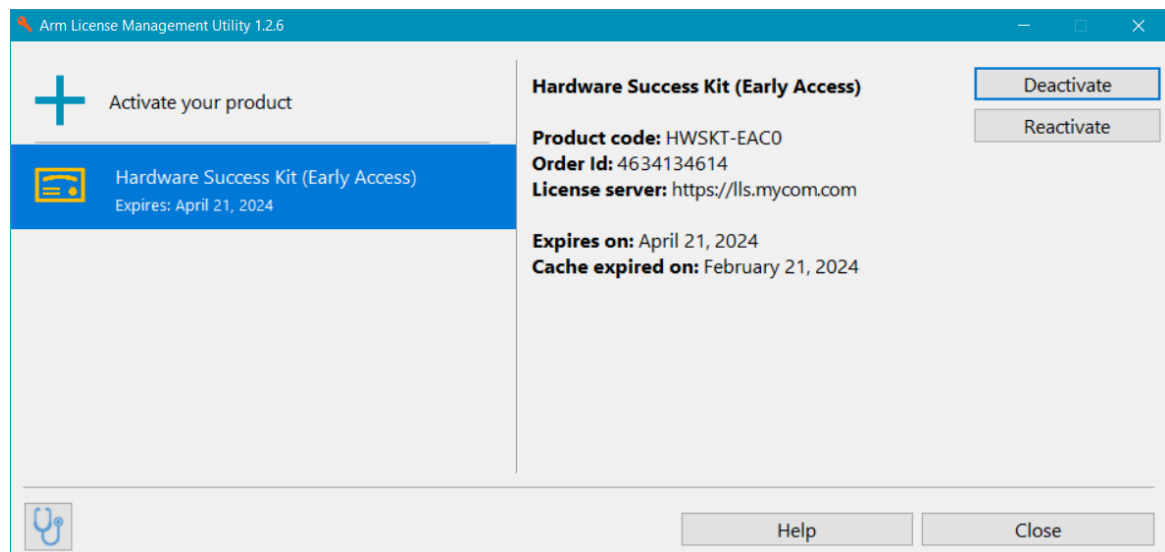
Find the version of the License Management Utility for your Arm development tool.

Procedure

View the License Management Utility version using one of the following methods:

- For License Management Utility version 1.2.6 and later:
 1. Open the License Management Utility using the instructions in the development tool documentation.
 2. The version of the License Management Utility is displayed in the titlebar.

Figure 1-1: License Management Utility version in titlebar



- From the command line:

1. Change to the directory containing the `armlm` command-line tool. For example, the `bin` directory in the Arm development tool installation location.
2. To show the License Management Utility version, enter the following command:

```
armlm --version
```

The following is an example output from this command:

```
Arm License Management Utility 1.2.5+30ca6b4f0f0d1118f5951999bfaf19d5645af48e
Copyright (C) 2020-2023 Arm Limited (or its affiliates). All rights reserved.
```

1.6 User-based licensing utilities release history

The following table describes the Arm user-based licensing utilities versions that have the functional changes. For detail of finding the version of the user-based licensing utilities, see [Find the License Management Utility version](#).

For details of how to update to the latest version of the Arm user-based licensing utilities, see [Patch user-based licensing](#).

Table 1-2: Release history for user-based licensing utilities

Utility version	Functional changes
1.3.6	Defect fixes and support for user-generated node-locked licenses for Keil AR166.
1.3.4	Defect fixes.
1.3.2	<ul style="list-style-type: none"> When products are activated using Proxy activation: <ul style="list-style-type: none"> Licenses do not, by default, make network requests to renew the license The license expiry period can be modified between 7 and 365 days Added <code>ARMLM_ECHO_LOG_CONTENT</code> environment variable to echo license log messages to standard output and standard error streams. For further details see Appendix A: Environment Variables. Activating a product now automatically deactivates any conflicting products. <code>ARMLM_LOG_ENABLED</code> can now have values of <code>true</code> and <code>false</code> instead of setting or unsetting the environment variable.
1.3.0	<ul style="list-style-type: none"> The latest version of the Arm licensing utilities are available from an Arm website. For more details see Patch user-based licensing. If you have a product that includes Keil MDK Professional, you can create node-locked licenses for Keil products that do not support user-based licensing. For more details see Backwards compatibility.
1.2.6	<ul style="list-style-type: none"> You can use the command line or the License Management Utility to manually extend a license for another 7 days. For more details see Extend your license. The version of the License Management Utility is now displayed in the titlebar.
1.2	<ul style="list-style-type: none"> You can use the command line or the License Management Utility to view recently deactivated licenses and reactivate a deactivated license. For more details see Deactivate and reactivate a product license. You can use the License Management Utility to provide a diagnostic report that is useful for providing your licensing details to Arm support. For more details see Create a diagnostic report.
1.1	First product release.

1.7 User-based licensing terminology

Describes the terms used in Arm user-based licensing documentation.

The following terms are used in user-based licensing documentation:

Activation

The act of fulfilling an entitlement for a specific user. When an Arm product is activated in an Arm development tool, a license to use the tool is activated.

Activation code

Sequence of letters and digits, formatted as a Universally Unique Identifier (UUID), which represents a seat of a product entitlement for a specific end-user or service account.



Products can also be activated using a local license server.

Arm license server

The Arm-hosted server contacted when a product activation code is activated or a license is renewed.

Development tool

An Arm software tool that requires a user license.

Cached license

The license information stored in the local license cache. This license is valid for 7 days but is extended when your Arm product successfully connects to the local license server or the Arm license server.

Device

Generic term for all computing devices capable of running Arm development tools. A device can be a workstation, a virtual machine, a server, or a mobile device such as a phone or a tablet.

End-user

A person interacting with the Arm development tool.

Floating

A license that is held centrally and handed out on-demand, checked out, to clients. The license is checked out for the duration that a license-managed feature is in use, and ends with the license being checked back in. A floating license is locked to a license server that serves the license to clients. This model is referred to as a concurrent licensing model, because it enforces maximum concurrent use. Unless the license is borrowed or cached, the client must maintain a network connection with the license server for the entire duration that the license-managed feature is in use.

License

Output of an activation, representing an entitlement for a user. A license is also referred to as a certificate. A license is typically stored on the local file system of the device used when activating your Arm development tool.

License server

A local server used to activate products and renew licenses.



You can also activate a product with an activation code.

Node-locked

A license that is locked to the device where the license-managed development tool runs. This model is referred to as a device-based licensing model.

Product

An Arm product entitlement defining the Arm development tools a user is entitled to use. A product allows the user to use one or many Arm development tools.

Proxy activation

A method of product activation that creates a license file to copy and import onto another device. This is useful when: * A device does not meet the network requirements * Using multiple devices in an automated and parallelised workflow, such as *Continuous Integration* (CI)

Seat

An abstract term for counting the number of licenses that are available or purchased. Under the user-based licensing model, there is exactly one seat for each user, regardless of the number of devices on which your Arm development tool is installed or run.

Service account

The operating system account that coordinates the automated use of development tools.

User

A generic term used to identify the entity interacting with the Arm development tool; can be an end-user or service account.

Username

The name identifying an account on an operating system. The username is associated with the operating system processes running the Arm development tool.

2. Activate and deactivate your product license

To enable your Arm development tools to work with your user-based product entitlement, you must activate your product by connecting to a license server or using an activation code. You can also activate your product on a device that cannot access the internet or your intranet. You can deactivate and reactivate your license, for example to investigate license errors.



Note

- Activating a product binds the license to the user for a minimum of 7 days. A bound license cannot be used by another user.
- You can activate a product on multiple devices using the same username and, if used, the same activation code.
- Your license agreement does not permit the sharing of the same username by more than one user.
- Usernames must be identical on all devices.
- During product activation or license renewal, the only personal data sent to the local license server or to the Arm license server is the username.
- For an overview of the license setup from the command line using a license server, watch the [End-user Setup video tutorial](#) (1:34 minutes).

2.1 Activate your product using a license server

You can activate your product using a local license server.

About this task

Activating a product binds the license to you for a minimum of 7 days. A bound license cannot be used by another user. You can activate the same product on multiple devices.



Note

- During product activation or license renewal, the only personal data sent to the local license server is the username.
- The username activating the license must be identical on all devices. For license server version 1.2024010.0 or earlier, the username is also case-sensitive.

Procedure

1. Obtain the license server URL and the Arm product code from your license server administrator.

**Note**

The server URL must:

- Include the `http://` or `https://` protocol prefix.
- Include the port number, unless the port number is a default port number. The default port numbers are 80 for `http://` and 443 for `https://`.
- Not include a path after the address or port number. For example, `http://myserver:5999` is a valid server URL, but `http://myserver:5999/api/1.0/instance/~` is not valid.

2. Check access to the license server URL, availability of licenses, and currently used licenses using the following command:

```
armlm inspect --server <license server URL>
```

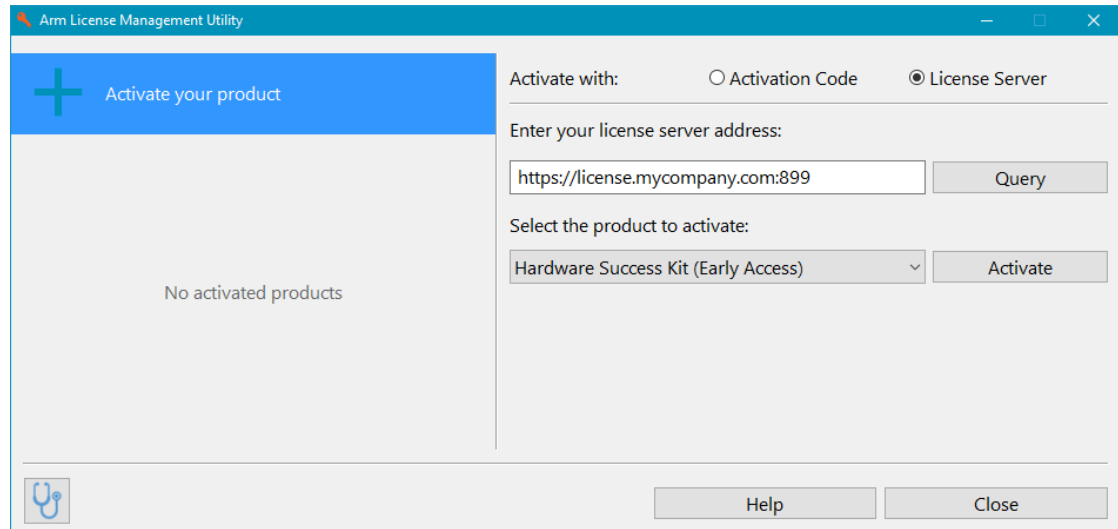
Use this command to check:

- The server address is correct and you can connect to the server from your device.
 - The different product licenses available on the server. If your product license is not available, your license server administrator might need to make more product licenses available.
 - The product licenses you already have on this device.
3. Activate your product using one of the following methods:
 - From the command line:
 - a. Change directory to the directory containing the `armlm` command-line tool. For example, the `bin` directory in the Arm development tool installation location.
 - b. Activate your product using the following command:

```
armlm activate --server <server_URL> --product <product_code>
```

Where:

- `<server_URL>` is the license server URL
- `<product_code>` is the product code for the required product
- Use the Arm License Management Utility:
 - a. Open the License Management Utility using the instructions in the development tool documentation.
 - b. Select **License Server**.
 - c. Enter the license server URL and click **Query**.

Figure 2-1: Activating your license using a license server

- d. Select the product to activate from the drop-down list and then click **Activate**.
 - e. Click **Close** and apply the change in your development tool.
- Set the `ARMLM_ONDEMAND_ACTIVATION` environment variable to `<product_code>@<server_URL>`, where:
 - `<product_code>` is the product code
 - `<server_URL>` is the URL to access the license server

For example, `HWSKT-STD0@http://license.serv.mycom.com:5999`.



Caution

Using this environment variable for licensing is unsuitable when many devices request license activation in a short period. For example, this could happen in a *Continuous Integration* (CI) workflow. This type of workflow floods the license server with requests, which can cause the server to reject license requests. For this type of workflow, you should use [Proxy activation](#) to activate the license once and then import the resultant license file on all devices.

Results

For License Management Utility version 1.3.2 or later, activating a product automatically deactivates conflicting products.

After activation, the product license is bound to the username of the end-user or service account for 7 days.

When you start an Arm development tool that supports user-based licensing on the same device, the software makes one attempt every 24 hours to contact the license server:

- If the software successfully connects to the server, the product license is extended for the next 7 days.
- If the software cannot contact the license server, you can still use the product license but the license is not extended. In this case, the product license expires on the device after the current 7-day period ends. If the product license expires, you are unable to use any Arm development tool that supports user-based licensing on the device.

Related information

[Activate a license on multiple devices](#) on page 22

[Proxy activation](#) on page 19

[Change the local license cache directory](#) on page 21

[Extend your license](#) on page 23

2.2 Activate your product using an activation code

You can activate your product with an activation code.

About this task

Activating a product binds the license to you for a minimum of 7 days. A bound license cannot be used by another user. You can activate the same product on multiple devices.



Note

- If you accidentally activated the product with an incorrect username, contact your license administrator to revoke the activation code and generate a new one.
- During product activation or license renewal, the only personal data sent to the Arm license server is the username.
- The username activating the product must be identical on all devices.

Procedure

1. Obtain the activation code from Arm or your license administrator. An activation code is a sequence of letters and digits that have the following pattern, where x represents any letter or digit:

```
xxxxxxxx-xxxx-xxxx-xxxx-xxxxxxxxxxxxx
```



Note

An activation code is not associated with any user or service account until its first use in the product activation process.

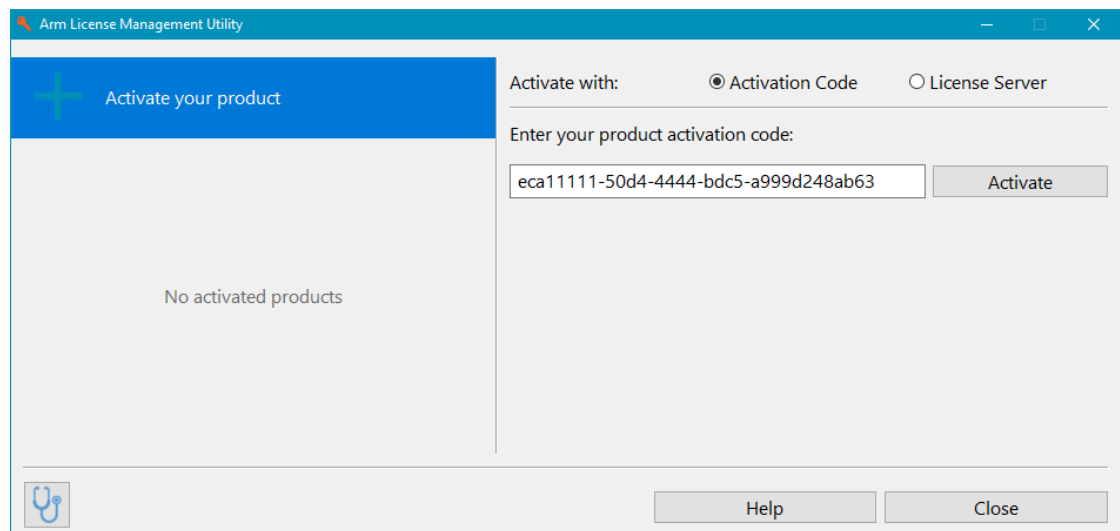
2. Activate your product using one of the following methods:
 - From the command line:

- a. Change directory to the directory containing the `armlm` command-line tool, for example the `bin` directory in the Arm development tool installation location.
- b. Activate your product using the following command:

```
armlm activate --code <activation_code>
```

- Use the Arm License Management Utility:
 - a. Open the License Management Utility using the instructions in the development tool documentation.
 - b. Select **Activation Code**.
 - c. Enter the activation code and click **Activate**.

Figure 2-2: Activating your license using an activation code



- d. Click **Close** and apply the change in your development tool.

Results

For License Management Utility version 1.3.2 or later, activating a product automatically deactivates conflicting products.

After activation, the product license is bound to the username of the end-user or service account for 7 days.

When you start an Arm development tool that supports user-based licensing on the same device, the software makes one attempt every 24 hours to contact the Arm license server:

- If the software successfully connects to the Arm license server, the product license is extended for the next 7 days.
- If the software cannot contact the Arm license server, you can still use the product license but the license is not extended. In this case, the product license expires on the device after the current 7-day period ends. If the product license expires, you are unable to use any Arm development tool that supports user-based licensing on the device.

For details of the Arm license server URLs for extending an activation code product license, see [Requirements for user-based licensing](#).

Related information

[Activate a license on multiple devices](#) on page 22

[Proxy activation](#) on page 19

[Activate a license without installing tools](#) on page 22

[Change the local license cache directory](#) on page 21

[Extend your license](#) on page 23

2.3 Proxy activation

Proxy activation allows you to create a license activation file on one device and then use that file to provide licenses on one or many other devices. These "target devices" can include local devices or devices running in the cloud.

Before you begin

- Install your Arm development tool on the target device.
- Install an Arm development tool or [install the Arm licensing utilities](#) on another device that has the required network access.
- When activating a product using a license server, the license server administrator must provide the license server URL and the Arm product code.
- When activating a product using an activation code, your license administrator must provide an activation code for each end-user and service account. An activation code is not associated with any user or service account until its first use in the product activation process.
- For an overview of how to use proxy activation, including how to extend the time a cache is valid, watch the [Proxy Activation and Borrow Period video tutorial](#) (2:12 minutes).



Note

Activating a license binds the license to the user for a minimum of 7 days. A bound license cannot be used by another user.

About this task

By default, licenses created by proxy activation do not attempt to renew the license, stopping all attempts to access a network. You can change this default behavior when you install the license on a target device.

Typically, proxy activation is used when:

- The target device does not meet the network requirements to activate a product or renew a license. For details of network requirements, see [Requirements for user-based licensing](#).
- Your workflow activates the same product for the same username on many devices in parallel. For example, *Continuous Integration* (CI) can use this type of workflow.

- You want to protect your workflow from failures to activate a product that can, for example, be caused by intermittent network or license server access.

Procedure

1. From the command line on the device that meets the network requirements, use the following command to create a file to transfer the license information:

```
C:\<installation_directory>\bin\armlm activate [--server <server_URL> --product  
<product_code> | --code <activation_code>] --as-user <user_name> --to-file  
<transfer_filename> [--borrow-period <days>]
```

Where:

- <installation_directory> is the installation directory of your Arm development tool.
- <server_URL> is the license server URL.
- <product_code> is the product code for the required product.
- <activation_code> is a user-based licensing activation code.
- <user_name> is the name of the Arm product user on the target device.
- <transfer_filename> is any file name for the transfer file.

The following option is only available when creating a transfer file using Arm licensing utilities version 1.3.2 or later:

- --borrow-period <days> extends the time a license cache is valid, from the default of 7 days. <days> can be any integer from 7 to 365.



Activating a product locks the license to the user and the license is unavailable to other users. Extending the time a license is valid also extends the time that the license is locked and cannot be used by another user.

2. Make the transfer file available to the target device, for example by copying the generated transfer file to one of the following:
 - The target device
 - A network drive that can be accessed by the target device
3. To activate the product, run the following command on the target device:

```
C:\<target_installation_directory>\bin\armlm import --file <transfer_filename>  
[--enable-renewal]
```

Where:

- <target_installation_directory> is the installation directory of your Arm development tool on the target device.
- <transfer_filename> is the file name of the transfer file created using the armlm activate command.

If the transfer file was created using Arm licensing utilities version 1.3.2 or later, you can use the following option to override the default where a license created using proxy activation never attempts to renew the license:

- `--enable-renewal` allows attempts to renew the license every 24 hours.



When the license is renewed, the time that the license cache is valid is set to 7 days. This overrides the time specified using the `armlm activate --borrow-period <days>` command.

Next steps

If your target device needs to use the license for longer than the license renewal period, you must repeat the proxy activation process before the renewal period expires.

Related information

[Change the local license cache directory](#) on page 21

2.4 Change the local license cache directory

You can change the directory in which the local license cache is located.

About this task

Changing the local license cache directory can be useful when:

- The user device does not have a local drive
- The user does not have a home directory on the device
- The user device does not have enough disk space on the local drive



- If you change the local cache directory to a location on another device or network, license activation and renewal will be slower.
 - The username activating the license must be identical on all devices. For license server version 1.2024010.0 or earlier, the username is also case-sensitive.
-

Procedure

1. On the device requiring the product license, set the `ARMLM_CACHED_LICENSES_LOCATION` environment variable to the new location for the local license cache.
2. If the new location does not contain an existing local license server cache, the local license server cache must be created using one of the following methods:
 - Activating the product on the local device using an [activation code](#) or a [license server URL](#).
 - Copying the local license cache from a device that already has an activated license for the user, to the location specified in the `ARMLM_CACHED_LICENSES_LOCATION` environment

variable. By default, the local license cache files are in the `.arm1m` directory in the user's home directory. The following are typical default locations:

- Windows: `C:\Users\<your username>\.arm1m`
- Linux: `/home/<your username>/.arm1m`
- macOS: `/Users/<your username>/.arm1m`

2.5 Activate a license on multiple devices

The license for a single user can be used on multiple devices for that same user, using one of the following methods:

- On multiple new devices, activate the license for an Arm development tool on each device:
 - [Activate your product using a license server](#)
 - [Activate your product using an activation code](#)
- Use [Proxy activation](#) to create a license file that can be used to import the product license on multiple devices.
- [Change the local license cache directory](#) to make license cache files available on a network drive, where they can be accessed by multiple devices.
- Copy the license cache of a licensed product onto multiple devices. By default, your local license cache is in your home location under the `.arm1m` directory. The following are typical default locations:
 - Windows: `C:\Users\<your username>\.arm1m`
 - Linux: `/home/<your username>/.arm1m`
 - macOS: `/Users/<your username>/.arm1m`

Copy the `.arm1m` directory to the home directory on multiple devices.

Related information

[Activate a license without installing tools](#) on page 22

2.6 Activate a license without installing tools

You can activate a license without installing an Arm development tool, by installing the Arm licensing utilities.

About this task

This process can be useful when creating a license file or activating a license cache on one device that is used to provide licensing for Arm developer tools on another device. For more information see [Proxy activation](#) and [Activate a license on multiple devices](#).

The Arm licensing utilities have the following license terms:

Your use of an Arm tool is subject to your acceptance of the End User License Agreement for Arm Software Development Tools, located within the `license_terms` folder of the downloaded archive. By installing and using the Arm tool, you agree to be bound by the terms and conditions of the end user license agreement.

Procedure

1. Download the Arm licensing utilities file from the Arm website:
 - [Windows x86 64-bit](#)
 - [Linux x86 64-bit](#)
 - [Linux Arm 64-bit](#)
 - [macOS Universal \(x86 64-bit and Arm 64-bit\)](#)
2. Unpack the `*.tar.gz` file onto the required device and location on that device. For example, using the following command:

```
tar -xf armlm-1.3.6-lin-arm_64-none-gui.tar.gz
```

In this topic, this location is referred to as the `<installation_directory>` directory.

3. Set up the Arm licensing utilities:
 - If using the `armlm` command line tool to activate the license, change directory to the `<installation_directory>/bin` directory.
 - If using the GUI to activate the license, open the GUI by running the `<installation_directory>/bin/armlm-gui` executable. For example, on Windows, double-click the `armlm-gui.exe` file.
4. Activate your license using an [activation code](#) or [license server URL](#).

2.7 Extend your license

Your product license is valid for 7 days after activation. When you use an Arm development tool that supports user-based licensing, the software makes one attempt every 24 hours to extend the license for another 7 days. You can extend the license yourself. For example, when you keep your Arm development tool open for longer than 7 days or you have limited access to the internet.

About this task



Note

If your administrator activated your product using [Proxy activation](#) with License Management Utility version 1.3.2 or later:

- A license can be valid for up to 365 days
- Your license may not be automatically extended

Procedure

Depending on your License Management Utility version, use one of the following methods to extend your license:

- For License Management Utility version 1.2.6 and later:

Copyright © 2022–2025 Arm Limited (or its affiliates). All rights reserved.

Non-Confidential

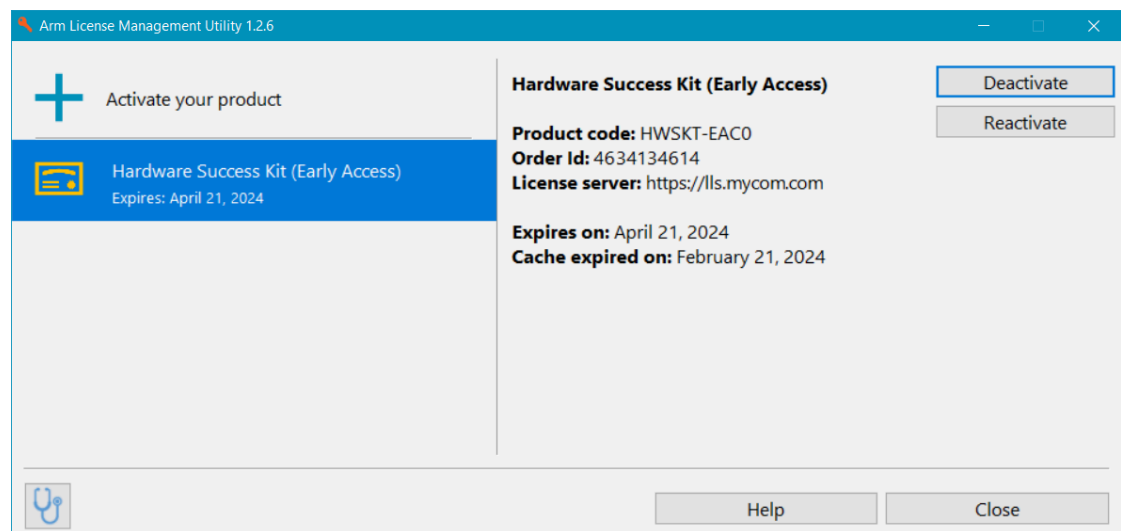
- From the command line:
 1. Change directory to the directory containing the `armlm` command-line tool, for example the `bin` directory in the Arm development tool installation location.
 2. Enter the following command:

```
armlm reactivate --product <product_code>
```

Where `<product_code>` is the product code for the required product.

- In the Arm development tool:
 1. Open the Arm License Management Utility using the instructions in the development tool documentation.
 2. Click the required product.

Figure 2-3: Product details in the License Management Utility



The date the license expires is shown as **Cache expires on**.

3. Click **Reactivate**.

If the product license has not been extended in the last 24 hours, the license is extended for the next 7 days. If the product license has been extended in the last 24 hours, the license is not extended.

- For License Management Utility version 1.2.5 and earlier, deactivate and then reactivate your license. For more details see [Deactivate and reactivate a product license](#).

2.8 Deactivate and reactivate a product license

Deactivating a product removes the license for your Arm product from a device. From version 1.2 of the Arm License Management Utility, you can easily reactivate recently deactivated licenses.

About this task

There is no need to deactivate your product when using your Arm product on a different device, because the license is associated with the user and not the devices that the license is used on. You may be required to deactivate your product to:

- Activate a different product with conflicting capabilities, for example when upgrading from an evaluation to a full product. For License Management Utility version 1.3.2 or later, activating a product automatically deactivates conflicting products.
- Investigate license configuration issues.



Note

- Deactivating a license is an activity local to a single device.
- Deactivation does not release the license so it can be used by another user:
 - For activation codes, an administrator can release a license by [revoking the activation code](#). The revoked license cannot be [renewed by the user](#). However, the administrator cannot reallocate the revoked license to another user until at least 7 days after the current user renewed the license cache on any device.
 - For a license server, a license is automatically released for use by another user when it has not been renewed for a minimum of 7 days.

Procedure

Deactivate and reactivate your product using one of the following methods:

- From the command line:
 1. Change directory to the directory containing the `armlm` command-line tool, for example the `bin` directory in the development tool installation location.
 2. List the active and deactivated licenses, with their product or activation codes, using the following command:

```
armlm inspect
```

3. To deactivate a license, use the following command:

```
armlm deactivate --product <product_code>
```

Alternatively, if using an activation code, you can use the following command to deactivate the license:

```
armlm deactivate --code <activation_code>
```

4. To reactivate the license:

- In version 1.2 or later of the Arm License Management Utility, you can reactivate a recently deactivated license using the following command:

```
armlm reactivate --product <product_code>
```



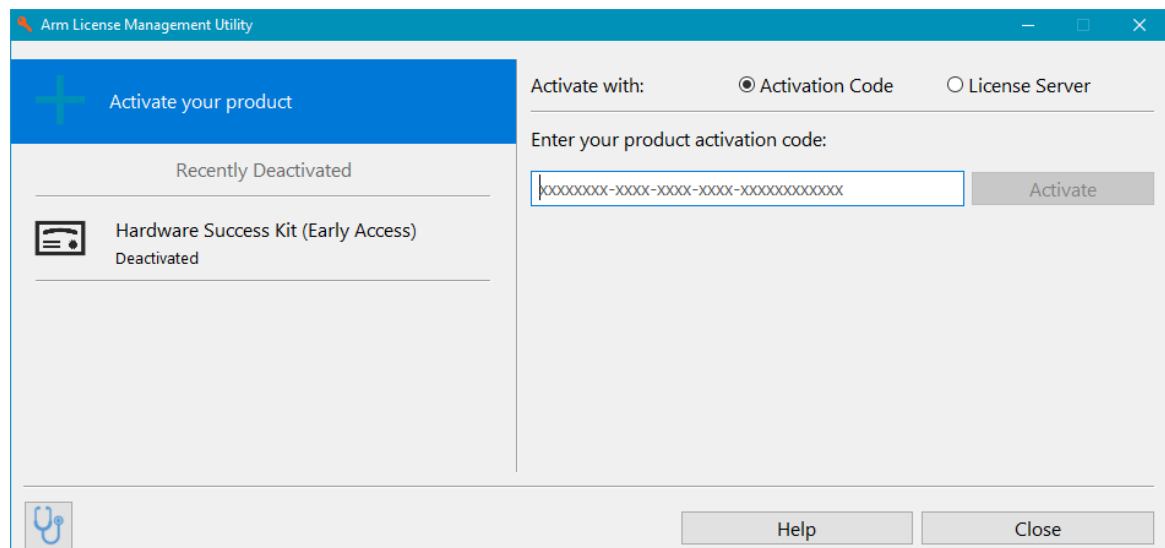
Note

You cannot reactivate a deactivated license that clashes with an active license.

- In version 1.1 of the License Management Utility, you need to activate the license again. For more information, see [Activate your product using a license server](#) or [Activate your product using an activation code](#).
- Use the Arm License Management Utility:
 1. Open the License Management Utility using the instructions in the development tool documentation.
 2. To deactivate a license:
 - a. In the left-hand side of the License Management Utility, select an active license from the license list.
 - b. Click **Deactivate**, then click **Yes** in the confirmation dialog box.

In version 1.2 or later of the Arm License Management Utility, the **Recently Deactivated** section in the license list displays all recently deactivated licenses.

Figure 2-4: A deactivated license



3. To reactivate a license:
 - In version 1.2 or later of the Arm License Management Utility, you can reactivate a recently deactivated license:

- a. In the left-hand side of the License Management Utility, select a deactivated license in the **Recently Deactivated** section in the license list.
- b. Click **Reactivate**, then click **Yes** in the confirmation dialog box.

**Note**

You cannot reactivate a deactivated license that clashes with an active license.

The reactivated license is displayed in the license list.

- In version 1.1 of the License Management Utility, you need to activate the license again. For more information, see [Activate your product using a license server](#) or [Activate your product using an activation code](#).

3. Diagnose licensing issues

Arm development tools enabled by user-based licensing might report errors. Each error related to user-based licensing has a corresponding unique error code as described in the following topics.

Error codes allow you to troubleshoot a problem with your license. Using the various error codes and their descriptions, you can quickly determine a solution for your licensing problem.

3.1 100 - No license found

A license for your Arm development tool was not found in the local license cache.

To resolve this problem, activate your product using the information that was sent to you by your license administrator.

Related information

[Activate and deactivate your product license](#) on page 14

3.2 101 - Product activation conflict

A product activation conflict was detected during a license renewal. This problem is caused by Arm updating the license definitions and the update causing a conflict with older licenses in your local license cache.

To resolve this problem:

1. Review your currently activated products using one of the following methods:
 - Open the Arm License Management Utility using the instructions in the development tool documentation.
 - Run the following from the command line:

```
armlm inspect
```



Note

If you do not have the complete activation code, contact your license administrator.

2. Deactivate all products you do not currently use.
3. For each of the remaining products:
 - a. Make a note of the activation code or the license server and product code. If you do not have the complete activation code, contact your license administrator.

- b. Deactivate and reactivate the products one at a time.
- c. If a product reactivation fails, there is a conflict between the product you have tried to reactivate and another product. The error message specifies the conflicting product.

Deactivate and reactivate the conflicting product.

If the problem persists, [contact support](#).

Related information

[Activate and deactivate your product license](#) on page 14

3.3 200 - Expired cached license

Your local license cache could not be renewed and has expired. This problem can happen for one of the following reasons:

- You have no network connection to the license server.

To resolve this problem, make sure that your device meets the network requirements and then restart your Arm development tool. For more information about the network requirements, see [Requirements for user-based licensing](#).

If your device cannot meet the network requirements, you must activate your product using another networked device. For more details, see [Proxy activation](#).

- You cannot modify the local license cache. This could happen when:
 - You run out of space on the device storing the local license cache.

To resolve this problem, delete files to make space available on your device or increase the disk quota on the device.

- You do not have permissions to modify the local license cache.

To resolve this problem, change the permissions on your local license cache directory so you can modify the directory and all files in the directory. By default, your local license cache directory is `.armlm` under your home location. The following are typical default locations:

- Windows: `C:\Users\<your username>\.armlm`
- Linux: `/home/<your username>/.armlm`
- macOS: `/Users/<your username>/.armlm`

- For license server users, the URL for your license server may have changed. In this case, contact your administrator for the new URL. Make the new URL available as follows:
 1. If you activate your product using the `ARMLM_ONDEMAND_ACTIVATION` environment variable, you must update the value of `ARMLM_ONDEMAND_ACTIVATION` to include the new URL, `<existing_product_code>@<new_server_URL>`.
 2. [Activate your product](#) using the new license server URL.

3.4 201 - Support and maintenance contract expired

You cannot use this version of the Arm development tool because your support and maintenance entitlement has expired. Support and maintenance allows you to use to the most recent version of the tool within the time period defined in the support and maintenance entitlement.

To resolve this problem, renew your support and maintenance contract through your usual sales channel. Alternatively, you can continue using an earlier version of the tool.

3.5 202 - Expired license

You can no longer use this Arm development tool because the associated license has expired.

To resolve this problem:

1. Renew your product entitlement through your usual sales channel.
2. After the renewal has been processed:
 - If the renewal uses the same product code:
 - a. Ensure you meet the network requirements. For more details, see [Requirements for user-based licensing](#).
 - b. Restart your development tool to refresh your local license cache.
 - If the renewal uses a different product code, activate the product. For more details, see [Activate and deactivate your product license](#).

3.6 300 - Corrupted license

The license for your Arm development tool has been corrupted. This is caused either by hardware failures, or by modifications to the files in the local license cache.

To resolve this problem, reactivate your product:

1. Obtain the activation code or license server and product code for your development tool using one of the following methods:
 - Open the Arm License Management Utility using the instructions in the development tool documentation. Click your product to display the product details.
 - Run the following from the command line:

```
armlm inspect
```

**Note**

If you do not have the complete activation code, contact your license administrator.

-
2. Deactivate and reactivate your product. For details see [Deactivate and reactivate a product license](#).

If reactivating your product does not solve the problem, [contact support](#).

Related information

[Activate and deactivate your product license](#) on page 14

3.7 301 - Corrupted local license cache

Your local license cache has been corrupted. This is caused by either hardware failures, or modifications to the files in the local license cache.

To resolve this error:

1. Obtain the activation codes or license server and product codes for all activated products using one of the following methods:
 - Open the Arm License Management Utility using the instructions in the development tool documentation. Click on a product to display the product details.
 - Run the following from the command line:

```
armlm inspect
```

**Note**

If you do not have the complete activation code, contact your license administrator.

-
2. Find the location of your local license cache. By default, your local license cache is in the user home location under the `.armlm` directory. The following are typical default locations:
 - Windows: `C:\Users\<your username>\.armlm`
 - Linux: `/home/<your username>/.armlm`
 - macOS: `/Users/<your username>/.armlm`

**Note**

You might have overridden the default location by setting the `ARMLM_CACHED_LICENSES_LOCATION` environment variable.

3. Make a backup copy of the local license cache directory.
4. Delete the local license cache directory.
5. Deactivate and reactivate all Arm products. For details see [Deactivate and reactivate a product license](#).

If reactivating your products does not solve your issue, [contact support](#).

Related information

[Activate and deactivate your product license](#) on page 14

3.8 400 - Unauthorized user

The user identifier associated with the runtime process of your Arm development tool does not match the information in the license.

This mismatch can happen for one of the following reasons:

- If you have a username that is different on different devices
- If you copied the local license cache from another user
- If you changed the default location of the local license cache to a directory populated with license information for another user

To resolve this error:

1. Check your username. Usernames are case sensitive. Check that the upper and lower case in your username is identical on all devices.
 - Check the username by running `whoami` in a console window. On Windows, ignore the groupname that is also returned as part of the string.
2. Obtain the activation codes or license server and product codes for all activated products using one of the following methods:
 - Open the Arm License Management Utility using the instructions in the development tool documentation. Click a product to display the product details.
 - Run the following from the command line:

```
armlm inspect
```



Note

If you do not have the complete activation code, contact your license administrator.

3. Deactivate and reactivate all Arm products. For details see [Deactivate and reactivate a product license](#).

If reactivating your products does not solve your issue, [contact support](#).

3.9 500 - Unexpected error

Your Arm development tool has encountered an unexpected licensing error. Your license administrator or an Arm support representative needs to analyze this error.

You need to [contact support](#).

3.10 501 - Library communication error

Your Arm development tool has encountered an unexpected licensing library communication error.

To resolve this problem:

1. Try re-installing your Arm development tool.
2. If this does not work, update the Arm licensing utilities on your device:
 - The preferred method is to update your development tool to the latest version or, at least, a [recommended version](#).
 - Alternatively, you can [update the licensing utilities](#) to the latest version.
3. Delete the local license cache directory on your machine. By default, your local license cache directory is `.armlm` under your home location. The following are typical default locations:
 - Windows: `C:\Users\<your username>\.armlm`
 - Linux: `/home/<your username>/.armlm`
 - macOS: `/Users/<your username>/.armlm`
4. [Activate your product license](#) again.

If this procedure does not resolve the problem, [contact support](#).

3.11 Product not supported error

Your Arm development tool has a licensing error stating your product is not supported with your license. For example:

```
armclang: error: FuSa versions of the Product is not supported with this license
```

This can happen when:

- You use a license server to provide your license
- You have upgraded your Arm development tool to a version that is not supported by the license that is currently in your license cache

To resolve this problem:

1. Check with your administrator see if the licenses on the license server need to be updated.

For further information on updating the licenses see [Update licenses for new product versions](#).

2. When the latest licenses for your product are available on the license server, update your local license cache:
 - If your license was activated by proxy, you need to [activated your license by proxy](#) again.
 - If your license was activated by another method, the license cache automatically updates when the license cache renews. A license cache renews once every 24 hours but if you want to use your Arm development tool sooner, you can renew your license cache manually by [extending the license](#).

3.12 License capability data was invalid error

Your Arm development tool has a licensing error stating your capability data was invalid. For example:

```
error: license capability data was invalid
```

This can happen when you have a development tool that contains an earlier version of the Arm licensing utilities.

To resolve this problem:

1. Update the Arm licensing utilities on your device:
 - The preferred method is to update your development tool to the latest version.
 - Alternatively, you can [update the licensing utilities](#) to the latest version.
2. Delete the local license cache directory on your machine. By default, your local license cache directory is `.armlm` under your home location. The following are typical default locations:
 - Windows: `C:\Users\<your username>\.armlm`
 - Linux: `/home/<your username>/.armlm`
 - macOS: `/Users/<your username>/.armlm`
3. [Activate your product license](#).

3.13 Contact support

If you need support with licensing problems, contact your license administrator or contact Arm support. If contacting Arm support, log a support case on <https://services.arm.com/support/s/contactsupport>.

When you contact support, you should include as much information as possible about your license configuration:

- From version 1.2 of the Arm License Management Utility, you can create a diagnostic report zip file. For further information see [Create a diagnostic report](#).
- For version 1.1 of the License Management Utility, include where possible:
 - A zip of your local license cache. By default, your local license cache is in the user home location under the `.armlm` directory. The following are typical default locations:
 - Windows: `C:\Users\<your username>\.armlm`
 - Linux: `/home/<your username>/.armlm`
 - macOS: `/Users/<your username>/.armlm`



You might have overridden the default location by setting the `ARMLM_CACHED_LICENSES_LOCATION` environment variable.

-
- The location of your local license cache.
 - The host name and IP address of your machine and your operating system.
 - Your username.
 - The licensed product.
 - License server URL or product code.
 - Arm License Management Utility version.
 - Details of Arm license environment variables (`ARMLM_*`, `ARM_*`, and `LM_*`).

3.14 Create a diagnostic report

When you contacting Arm support, you should include a diagnostic report zip file.

About this task



This functionality is only available in Arm License Management Utility version 1.2 and later. If your Arm development tools have an earlier version of the License Management Utility, you can download the latest Arm licensing utilities and create a diagnostic report using these utilities. For more details see [Activate a license without installing tools](#).

The diagnostic report zip file contains:

- Your local license cache
- Your license details
- License logs
- Any transient caches


- Relevant environment information including username, host name, location of the local storage, License Management Utility version, operating system, and user-based licensing environment variables (ARMLM_*)
- Legacy licensing information including the content of `.flexlmrc` and relevant environment variables (ARM_* and LM_*)

Procedure

1. Create log files for your license interactions.
Set the ARMLM_LOG_ENABLED environment variable to `true` and then run through the failing license interactions again.
2. You can obtain the diagnostic report zip file using one of the following methods:
 - From the command line:
 - a. Change directory to the directory containing the `armlm` command-line tool, for example the `bin` directory in the Arm development tool installation location.
 - b. Enter the following command:

```
armlm report [--to-file <filepath>]
```

Where `--to-file` can be used to specify the file path and file name for the diagnostic report file. If not used, the report file is saved in the current directory using the `armlm-report-<date and time>` file naming convention.

- In the Arm development tool:
 - a. Open the Arm License Management Utility using the instructions in the development tool documentation.
 - b. Click **Report** .
 - c. In the new dialog box, choose the name and download location for the diagnostic report zip file.
3. Unset the ARMLM_LOG_ENABLED environment variable. This stops large license log files being created when using Arm products.



In License Management Utility version 1.3.2 or later, set ARMLM_LOG_ENABLED to `false` to stop large license log files being created.

4. Troubleshooting

Describes how you can fix problems in user-based licensing.

4.1 Patch user-based licensing

You can patch user-based licensing to the use latest version.

About this task

Patching user-based licensing to the latest version version is useful when:

- User-based licensing is not working correctly in your current environment.
- You want to use a user-based licensing feature that is not available in the current version of user-based licensing of your Arm development tool. For details of the functional changes in the Arm user-based licensing utilities releases see [User-based licensing utilities release history](#).

Procedure

1. Download the Arm licensing utilities file from the Arm website:
 - [Windows x86 64-bit](#)
 - [Linux x86 64-bit](#)
 - [Linux Arm 64-bit](#)
 - [macOS Universal \(x86 64-bit and Arm 64-bit\)](#)
2. Unpack the *.tar.gz file. For example, using the following command:

```
tar -xf armlm-1.3.6-lin-arm_64.tar.gz
```

In this topic, this location is referred to as the <installation_directory> directory.

3. Locate the following licensing library files in the installation directory of the Arm development tool that requires the licensing patch:
 - Windows: armlm.dll, armlm.exe, and armlm-ipc.exe
 - Linux: libarmlm.so, armlm, and armlm-ipc
 - macOS: libarmlm.dylib, armlm and armlm-ipc

For example for Arm® Development Studio version 2023.1 on Windows, these licensing library files are installed into the following locations for a default installation:

- C:\Program Files\Arm\Development Studio 2023.1\sw\ARMCompiler6.21\bin
 - C:\Program Files\Arm\Development Studio 2023.1\sw\models\bin
4. Review and record the permissions on the licensing library files.
 5. As a backup, copy the licensing library files from the Arm development tool installation directory to a safe location.
 6. Copy the latest version of the licensing library files from the <installation_directory>/lib directory.

7. Paste the licensing library files over all instances of the previously located files in the Arm development tool.
Check the permissions on these files are the same as you recorded earlier. If they permissions are different, modify the permissions.
8. Test user-based licensing works as expected for the patched Arm development tool. For example:
 - Open the Arm License Management Utility and check that your product is still activated.
 - Run the `armlm inspect` command to view details of your licenses.

Appendix A Environment Variables

The topic describes the environment variables available for user-based licensing on the user device.

In the table, `<license_directory>` refers to the directory containing the license files. The following are typical default locations:

- Windows: `C:\Users\<your username>\.armlm`
- Linux: `/home/<your username>/.armlm`
- macOS: `/Users/<your username>/.armlm`

You can use the `ARMLM_CACHED_LICENSES_LOCATION` environment variable to override the default license file directory.

Table A-1: Environment variables available in user-based licensing

Environment variable	Description	Default if not set
<code>ARMLM_CACHED_LICENSES_LOCATION</code>	Specifies the full path to the directory containing the license files.	<code>.armlm</code> in the user home directory.
<code>ARMLM_ECHO_LOG_CONTENT</code>	<p>Available in License Management Utility version 1.3.2 or later.</p> <p>Set to <code>true</code> to echo log errors to standard output and standard error streams. The same logging is always added to files in the <code><license_directory>/logs</code> directory. If <code>ARMLM_LOG_ENABLED</code> is set to <code>true</code>, the licensing operation logs are also echoed to standard output and standard error streams.</p> <p>Set to <code>false</code> to stop log files echoing to standard output and standard error streams.</p>	<code>false</code>
<code>ARMLM_LOG_ENABLED</code>	<p>Set to <code>true</code> to create a log file containing details of all licensing operations. The log file is created in the <code><license_directory>/logs</code> directory with a unique name.</p> <p>Unset the environment variable to log licensing errors only. For License Management Utility version 1.3.2 or later, you can set <code>ARMLM_LOG_ENABLED</code> to <code>false</code> to log licensing errors only.</p> <p>Note: Due to large number of log messages, you should only set this environment variable to <code>true</code> when diagnosing problems. For example, before creating a diagnostic report.</p>	Only errors are logged.

Environment variable	Description	Default if not set
ARMLM_MAX_LOG_FILES	Specifies the number of log files to keep in the <license_directory>/logs directory. A new log file is created for every error encountered. When the maximum number of log files is exceeded, the oldest log file is deleted.	10
ARMLM_ONDEMAND_ACTIVATION	<p>Specifies the license server and product always used to license Arm development tools. The value must have the <product_code>@<server_URL> format, where:</p> <ul style="list-style-type: none"> • <product_code> is the product code • <server_URL> is the URL to access the license server <p>For example, HWSKT-STD0@http://license.serv.mycom.com:5999.</p> <p>Caution: Using this environment variable for licensing is unsuitable when many devices request license activation in a short period. For example, this could happen in a <i>Continuous Integration</i> (CI) workflow. This type of workflow floods the license server with requests, which can cause the server to reject license requests. For this type of workflow, you should use Proxy activation to activate the license once and then import the resultant license file on all devices.</p>	Arm development tools are licensed using the license server and product specified in the license cache.

Proprietary Notice

This document is protected by copyright and other related rights and the use or implementation of the information contained in this document may be protected by one or more patents or pending patent applications. No part of this document may be reproduced in any form by any means without the express prior written permission of Arm Limited ("Arm"). No license, express or implied, by estoppel or otherwise to any intellectual property rights is granted by this document unless specifically stated.

Your access to the information in this document is conditional upon your acceptance that you will not use or permit others to use the information for the purposes of determining whether the subject matter of this document infringes any third party patents.

The content of this document is informational only. Any solutions presented herein are subject to changing conditions, information, scope, and data. This document was produced using reasonable efforts based on information available as of the date of issue of this document. The scope of information in this document may exceed that which Arm is required to provide, and such additional information is merely intended to further assist the recipient and does not represent Arm's view of the scope of its obligations. You acknowledge and agree that you possess the necessary expertise in system security and functional safety and that you shall be solely responsible for compliance with all legal, regulatory, safety and security related requirements concerning your products, notwithstanding any information or support that may be provided by Arm herein. In addition, you are responsible for any applications which are used in conjunction with any Arm technology described in this document, and to minimize risks, adequate design and operating safeguards should be provided for by you.

This document may include technical inaccuracies or typographical errors. THIS DOCUMENT IS PROVIDED "AS IS". ARM PROVIDES NO REPRESENTATIONS AND NO WARRANTIES, EXPRESS, IMPLIED OR STATUTORY, INCLUDING, WITHOUT LIMITATION, THE IMPLIED WARRANTIES OF MERCHANTABILITY, SATISFACTORY QUALITY, NON-INFRINGEMENT OR FITNESS FOR A PARTICULAR PURPOSE WITH RESPECT TO THE DOCUMENT. For the avoidance of doubt, Arm makes no representation with respect to, and has undertaken no analysis to identify or understand the scope and content of, any patents, copyrights, trade secrets, trademarks, or other rights.

TO THE EXTENT NOT PROHIBITED BY LAW, IN NO EVENT WILL ARM BE LIABLE FOR ANY DAMAGES, INCLUDING WITHOUT LIMITATION ANY DIRECT, INDIRECT, SPECIAL, INCIDENTAL, PUNITIVE, OR CONSEQUENTIAL DAMAGES, HOWEVER CAUSED AND REGARDLESS OF THE THEORY OF LIABILITY, ARISING OUT OF ANY USE OF THIS DOCUMENT, EVEN IF ARM HAS BEEN ADVISED OF THE POSSIBILITY OF SUCH DAMAGES.

Reference by Arm to any third party's products or services within this document is not an express or implied approval or endorsement of the use thereof.

This document consists solely of commercial items. You shall be responsible for ensuring that any permitted use, duplication, or disclosure of this document complies fully with any relevant

export laws and regulations to assure that this document or any portion thereof is not exported, directly or indirectly, in violation of such export laws. Use of the word “partner” in reference to Arm’s customers is not intended to create or refer to any partnership relationship with any other company. Arm may make changes to this document at any time and without notice.

This document may be translated into other languages for convenience, and you agree that if there is any conflict between the English version of this document and any translation, the terms of the English version of this document shall prevail.

The validity, construction and performance of this notice shall be governed by English Law.

The Arm corporate logo and words marked with ® or ™ are registered trademarks or trademarks of Arm Limited (or its affiliates) in the US and/or elsewhere. Please follow Arm’s trademark usage guidelines at <https://www.arm.com/company/policies/trademarks>. All rights reserved. Other brands and names mentioned in this document may be the trademarks of their respective owners.

Arm Limited. Company 02557590 registered in England.

110 Fulbourn Road, Cambridge, England CB1 9NJ.

PRE-1121-V1.0

Product and document information

Read the information in these sections to understand the release status of the product and documentation, and the conventions used in Arm documents.

Product status

All products and services provided by Arm require deliverables to be prepared and made available at different levels of completeness. The information in this document indicates the appropriate level of completeness for the associated deliverables.

Product completeness status

The information in this document is Final, that is for a developed product.

Revision history

These sections can help you understand how the document has changed over time.

Document release information

The Document history table gives the issue number and the released date for each released issue of this document.

Document history

Issue	Date	Confidentiality	Change
1.3-06	30 April 2025	Non-Confidential	Documentation update 6 for v1.3
1.3-05	31 January 2025	Non-Confidential	Documentation update 5 for v1.3
1.3-04	30 November 2024	Non-Confidential	Documentation update 4 for v1.3
1.3-03	30 September 2024	Non-Confidential	Documentation update 3 for v1.3
1.3-02	31 July 2024	Non-Confidential	Documentation update 2 for v1.3
1.3-01	30 May 2024	Non-Confidential	Documentation update 1 for v1.3
1.3-00	26 April 2024	Non-Confidential	Updated document for v1.3
1.2-11	28 March 2024	Non-Confidential	Documentation update 11 for v1.2
1.2-10	27 February 2024	Non-Confidential	Documentation update 10 for v1.2
1.2-09	29 January 2024	Non-Confidential	Documentation update 9 for v1.2

Issue	Date	Confidentiality	Change
1.2-08	21 November 2023	Non-Confidential	Documentation update 8 for v1.2
1.2-07	27 October 2023	Non-Confidential	Documentation update 7 for v1.2
1.2-06	30 September 2023	Non-Confidential	Documentation update 6 for v1.2
1.2-05	24 August 2023	Non-Confidential	Documentation update 5 for v1.2
1.2-04	29 June 2023	Non-Confidential	Documentation update 4 for v1.2
1.2-03	18 May 2023	Non-Confidential	Documentation update 3 for v1.2
1.2-02	28 April 2023	Non-Confidential	Documentation update 2 for v1.2
1.2-01	29 March 2023	Non-Confidential	Documentation update 1 for v1.2
1.2-00	24 February 2023	Non-Confidential	Updated document for v1.2
1.1-05	27 January 2023	Non-Confidential	Documentation update 5 for v1.1
1.1-04	28 November 2022	Non-Confidential	Documentation update 4 for v1.1
1.1-03	28 October 2022	Non-Confidential	Documentation update 3 for v1.1
1.1-02	23 September 2022	Non-Confidential	Documentation update 2 for v1.1
1.1-01	22 July 2022	Non-Confidential	Updated document for v1.1
1.1-00	21 June 2022	Non-Confidential	Document update for v1.1 Beta
1.0-00	10 March 2022	Non-Confidential	New document for v1.0

Change history

The functional changes to the User-based licensing utilities are described in [User-based licensing utilities release history](#).

Conventions

The following subsections describe conventions used in Arm documents.

Glossary

The Arm Glossary is a list of terms used in Arm documentation, together with definitions for those terms. The Arm Glossary does not contain terms that are industry standard unless the Arm meaning differs from the generally accepted meaning.

See the Arm Glossary for more information: developer.arm.com/glossary.

Typographic conventions

Arm documentation uses typographical conventions to convey specific meaning.

Convention	Use
<i>italic</i>	Citations.
bold	Interface elements, such as menu names. Terms in descriptive lists, where appropriate.
monospace	Text that you can enter at the keyboard, such as commands, file and program names, and source code.
monospace <u>underline</u>	A permitted abbreviation for a command or option. You can enter the underlined text instead of the full command or option name.
<and>	Encloses replaceable terms for assembler syntax where they appear in code or code fragments. For example: <pre>MRC p15, 0, <Rd>, <CRn>, <CRm>, <Opcode_2></pre>
SMALL CAPITALS	Terms that have specific technical meanings as defined in the <i>Arm® Glossary</i> . For example, IMPLEMENTATION DEFINED , IMPLEMENTATION SPECIFIC , UNKNOWN , and UNPREDICTABLE .



We recommend the following. If you do not follow these recommendations your system might not work.



Your system requires the following. If you do not follow these requirements your system will not work.



You are at risk of causing permanent damage to your system or your equipment, or harming yourself.



This information is important and needs your attention.



A useful tip that might make it easier, better or faster to perform a task.



A reminder of something important that relates to the information you are reading.

Useful resources

This document contains information that is specific to this product. See the following resources for other useful information.

Access to Arm documents depends on their confidentiality:

- Non-Confidential documents are available at developer.arm.com/documentation. Each document link in the following tables goes to the online version of the document.
- Confidential documents are available to licensees only through the product package.

Arm product resources	Document ID	Confidentiality
User-based Licensing Administration Guide	107573	Non-Confidential
User-based Licensing: Enabling Legacy Editions of Keil MDK video tutorial	-	Non-Confidential
User-based Licensing: End-user Setup video tutorial	-	Non-Confidential
User-based Licensing: Proxy Activation and Borrow Period	-	Non-Confidential